

METALS

✓ EMPTY & RINSED
✓ FREE OF FOOD RESIDUE

✓ INCLUDE



ALUMINUM BEVERAGE CANS

⊗ DO NOT INCLUDE



CRUSHED OR UNCRUSHED



ALUMINUM CUPS



ALUMINUM BOTTLES & LIDS



KITCHEN ALUMINUM



FOIL BAKEWARE



ALUMINUM FOOD CANS

ALUMINUM FOIL



STEEL CANS



WITH OR WITHOUT LABELS



STEEL LIDS



CAMP FUEL



PAINT CANS



PROPANE TANKS



AEROSOL CANS



KITCHEN ALUMINUM

ALUMINUM FOIL



FOIL BAKEWARE



ALUMINUM FOOD CANS & LIDS



STEEL CANS



FOIL LINED PLASTIC PACKAGE



FOIL LOOKING PLASTIC POUCHES

GLASS

✓ EMPTY & RINSED
✓ FREE OF FOOD RESIDUE



GLASS

PALMER LOCATION ONLY



BOTTLES & JARS (LABELS OK)



GLASSES & STEMWARE



COFFEE MUGS



CERAMICS



LIDS



PLATE GLASS



PYREX

WINDSHIELDS

For more information on [recycling](https://valleyrecycling.org), you can visit our classroom at 9465 E Chanlyut Circle, schedule a field trip, call us at 907.745.5544 or go to our website valleyrecycling.org



GUIDE TO

RECYCLING

IN THE MAT-SU

September 2025



9465 E CHANLYUT CIRCLE, PALMER AK

Monday – Friday 9:30 – 5

Saturday 8 – 5

CLOSED SUNDAY

907.745.5544



TRANSFER SITE RECYCLING

A cooperative effort with the Mat-Su Borough, Valley Recycling (VCRS) and community volunteers.



BIG LAKE

13507 N HOLLYWOOD RD

Saturdays
& Sundays

12noon – 3pm

907.892.2400



TALKEETNA

MILE 12.5 TALKEETNA SPUR

Tuesdays
& Saturdays

12noon – 4pm

907.355.8324



WILLOW

15469 WILLOW STATION RD

2nd Saturday
& Last Friday

11 – 1:30pm

907.495.6633



SUTTON

15625 N GLENN HWY

1st & 3rd
Sunday & Monday

2 – 5pm

907.745.0737

907.861.7640

QUESTIONS? WANT TO VOLUNTEER? CALL US!



VALLEY COMMUNITY RECYCLING SOLUTIONS



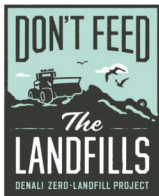
501(c)(3) EIN 92-0174289



VALLEY COMMUNITY RECYCLING SOLUTIONS



valleyrecycling.org



PRE-SORT by category according to the following guidelines.

If it's not recyclable, it ends up in the landfill!
Follow the guidelines to be sure your recycling gets a new life.

SORT AT HOME - BRING IT SORTED - IT HELPS EVERYONE!

PLASTICS

✓ **EMPTY & RINSED**
✓ **FREE OF FOOD RESIDUE**

✓ **INCLUDE**



BOTTLES

✗ **DO NOT INCLUDE**



SCREW NECK TOP



SCREW NECK JARS

WITH OR WITHOUT LABELS



CLAMSHELLS



CUPS & LIDS



PUMPS



CAPS



JUGS



COLORED OR OPAQUE JUGS & BOTTLES W/SCREW NECK TOP



MOTOR OIL CONTAINERS



CAPS & LIDS



PAINT CONTAINERS



PUMPS



CONTAINERS

ANY SHAPE UP TO 1 GAL. SIZE



TUBES



REUSABLE CONTAINERS



FOOD STORAGE & LIDS



DVD CASES



TO-GO CONTAINERS



PILL BOTTLES



BAGS



CRATES



TOTES & STORAGE



BUCKETS



OUTDOOR BULKY RIGIDS



PLASTIC BAGS & FILM PACKAGING



GROCERY & PRODUCE BAGS



PACKAGING & CASE WRAP



POLY MAILERS



DRY CLEANING BAGS



BUBBLE WRAP



PALLET WRAP



CHIP BAGS & PLASTIC SNACK WRAPPERS



PLASTIC LINED PAPER MAILER



STAND UP POUCHES



BAGS WITH NETTING



CELLOPHANE PACKAGING



6 PACK RINGS



COMPOSTABLE BAGS

PAPER



PAPER = TREES. Use Wisely.

✓ **INCLUDE**



NEWSPAPER

✗ **DO NOT INCLUDE**



WITH OR WITHOUT PRINT



INSERTS



LOOSE



BUNDLED



TWINE OR STRING



Recycling newspaper supports local economic development!



CARDBOARD



CORRUGATED CARDBOARD



BROWN PAPER BAGS



STYROFOAM



SOAKING WET CARDBOARD



WAXED BOXES



GREASY PIZZA BOXES



OFFICE PAPER



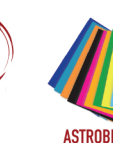
JUNK MAIL



ENVELOPES



FILE FOLDERS



ASTROBRIGHT OR NEON



NOTEBOOK BINDINGS



MIXED PAPER



EGG CARTONS



PAPERBOARD PACKAGING



MAGAZINES & CATALOGS



WAXED CARTONS



FOIL GIFT WRAP, RIBBONS & BOWS



TISSUE PAPER

NAPKINS & PAPER TOWELS

PAPER DINING WARE



SHREDDED OFFICE PAPER



BAGGED

Only shred what you have to!



LOOSE



It's a small planet...
REFUSE, REDUCE, REUSE, and then RECYCLE.



METALS ON BACK